

Project Profile

Windrush Primary School, Woolwich - London

Consultant

- Billingford Limited

Client

- CBM Serv Limited

Sector

- Education

Products

- DW & ME

Equipment

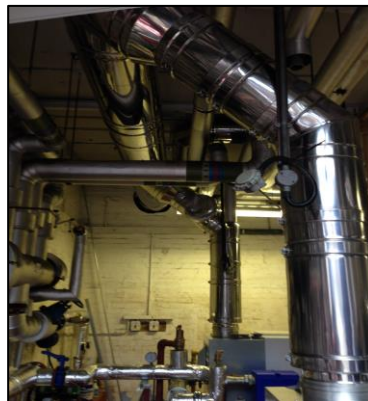
- MHS Ultragas R605

Application

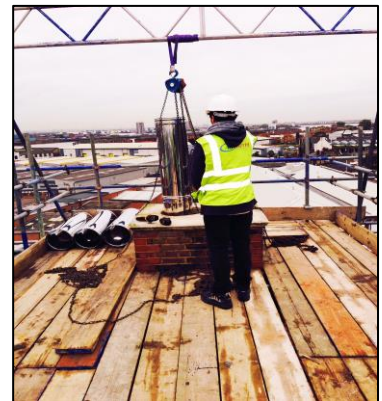
- High Efficiency Condensing



Front Entrance



Boiler Room Flues



Installation of chimney liner

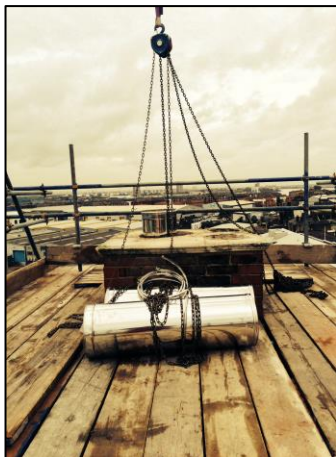
The project involved the removal of the existing twin wall header system and the installation of a new twin wall four hour fire rated system to serve two MHS Ultragas condensing boilers.

Airtherm had to undertake a CCTV survey to establish to condition of the existing chimney and to ensure the new liner would pass down the stack without any obstruction.

The existing 24m high brick built chimney is lined throughout with our single wall fully welded product suitable for the application. Our experience team of fitters used a chain block to lower the sections down the stack until reaching the base, completed using a top stub termination cowl and flashing plate.



Product Solution



Installation of chimney liner



Chimney Termination

- Boilers: MHS
- Model: R605
- Application: Chimney / Flue system
- Operating mode: Wet
- Pressure: positive pressure
- Working pressure: 150 Pa (product will operate 300pa max)
- Inner wall: 316L1.4404/1.457 thickness 0,6 mm
- Outer wall: 304/ 1.4301 thickness 0,5
- Insulation: 30mm thick Rockwool insulation
- Sealant : Tri-lip 'o' type silicone ring
- Fuel type: Gas
- Chimney: Single wall fully welded stainless

• ***Other Application our Flues can be used:***

- Condensing boilers
- Atmospheric gas-fired boilers
- Gas blown boilers
- Industrial ovens, large-scale establishments
- Wood-fired stoves



Contact Details:

Airtherm Engineering Ltd
Unit 8A,
Gainsborough Trading Est
Stourbridge
West Midlands
DY9 7ND

Tel: 0844 8092509
Fax: 01384 375218

