

Trinity Catholic College, Leamington Spa

Consultant

- Spicer

Client

- Inderflame Limited

Sector

- Education

Products

- DW Flue System

Equipment

- Hamworthy Fleet

Application

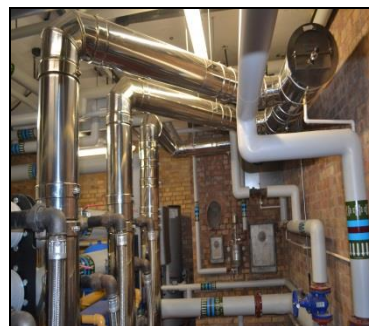
- High Efficiency Condensing



Front Entrance



Twin wall flue



Header System with 3° incline

Airtherm have recently designed, supplied and installed a complete twin wall stainless steel flue system serving each Hamworthy Fleet 350 condensing boiler at Trinity Catholic School, Leamington Spa, Warwickshire.

Trinity Catholic School is a mixed Catholic secondary school in Leamington Spa, Warwickshire, England. The school has Technology College status awarded in 2000 and Arts College status awarded in 2004 and had been awarded Artsmark Gold award.

The existing Hamworthy Purewell 120 boilers were removed by the contractor during the School summer shut-down, working on a tight program the boilers were installed followed by the installation of our flue system.

Airtherm Engineering Ltd only uses branded products which are synonymous with the highest quality - and it is this reputation that enables specifiers and contractors to use our versatile product range with total confidence



Hamworthy Boilers

Product Solution



Stainless Steel Flues



Primary Flues

- Boilers: Hamworthy
- Model: Fleet 350
- Application: Chimney / Flue system
- Operating mode: Wet
- Pressure: Negative / positive pressure
- Working pressure: 150 Pa (product will operate 300pa max)
- Inner wall: 316L1.4404/1.457 thickness 0,6 mm
- Outer wall: 304/ 1.4301 thickness 0,5
- Insulation: 30mm thick Rockwool insulation
- Sealant : Tri-lip 'o' type silicone ring
- Fuel type: Gas

• ***Other Application DW Flues can be used:***

- Condensing boilers
- Atmospheric gas-fired boilers
- Gas blown boilers
- Industrial ovens, large-scale establishments
- Wood-fired stoves



Contact Details:

Airtherm Engineering Ltd
Unit 8A,
Gainsborough Trading Est
Stourbridge
West Midlands
DY9 7ND

Tel: 0844 8092509
Fax: 01384 375218

